

# LTC4211

## Hot Swap Controller with Multifunction Current Control

### DESCRIPTION

Demonstration circuit 536B is a hot swap controller with multifunction current control featuring the LTC<sup>®</sup>4211. The DC536B-A is configured to operate with up to 7A load and DC536B-B up to 20A load.

The DC536B permits evaluating the LTC4211 during turn-on and turn-off transients as well as during steady-state conditions.

The DC536B updates obsoleted components (Q1, D1) in DC536A.

**Design files for this circuit board are available at <http://www.linear.com/demo/DC536B>**

LT, LT, LTC, LTM, Linear Technology and the Linear logo are registered trademarks of Linear Technology Corporation. All other trademarks are the property of their respective owners.

### PERFORMANCE SUMMARY Specifications are at T<sub>A</sub> = 25°C

SYMBOL	PARAMETER	CONDITIONS	MIN	TYP	MAX	UNITS
V <sub>CC</sub>	V <sub>CC</sub> Supply Voltage Range		2.5		16.5	V
V <sub>LKO</sub>	Internal V <sub>CC</sub> Undervoltage Lockout	V <sub>CC</sub> Low-To-High Transition	2.13	2.3	2.47	V
V <sub>ONHI</sub>	ON Threshold High		1.23	1.316	1.39	V
V <sub>ONLO</sub>	ON Threshold Low		1.20	1.236	1.26	V
I <sub>GATEUP</sub>	Gate Pull-Up Current	Charge Pump On, V <sub>GATE</sub> ≤ 0.2V	-12.5	-10	-7.5	μA
I <sub>GATEDOWN</sub>	Normal Gate Pull-Down Current Fast Gate Pull-Down Current	ON Low FAULT Latched and Circuit Breaker Tripped or in UVLO	130	200 50	270	μA mA
V <sub>CB(FAST)</sub>	SENSE Trip Voltage (V <sub>CC</sub> - V <sub>SENSE</sub> )	Fast Comparator Trip	130	150	170	mV
V <sub>CB(SLOW)</sub>	SENSE Trip Voltage (V <sub>CC</sub> - V <sub>SENSE</sub> )	Slow Comparator Trip	40	50	60	mV
ΔV <sub>GATE</sub>	External N-Channel Gate Drive	V <sub>GATE</sub> - V <sub>CC</sub> (For V <sub>CC</sub> = 2.5V) V <sub>GATE</sub> - V <sub>CC</sub> (For V <sub>CC</sub> = 2.7V) V <sub>GATE</sub> - V <sub>CC</sub> (For V <sub>CC</sub> = 3.3V) V <sub>GATE</sub> - V <sub>CC</sub> (For V <sub>CC</sub> = 5V) V <sub>GATE</sub> - V <sub>CC</sub> (For V <sub>CC</sub> = 12V) V <sub>GATE</sub> - V <sub>CC</sub> (For V <sub>CC</sub> = 15V)	2.5 4.5 5.0 10 10 8		8 8 10 16 18 18	V V V V V V
I <sub>CB</sub>	Circuit Breaker Threshold	DC536B-A DC536B-B	5.7 16	7 20	8.5 24	A A

### OPERATING PRINCIPLES

The LTC4211 is a low voltage hot swap controller that has a 2.5V to 16.5V operating range and a 17V absolute maximum operating voltage for the V<sub>CC</sub> pin. DC536B is populated for 5V operation, but it can easily be re-adjusted for any voltage between 2.5V to 16.5V by replacing R3 and R1 (top resistors in the FB divider and the ON pin voltage divider). There are two assembly options for load current.

The DC536B-A is populated with an Si4134 MOSFET in an SO-8 package and a 7mΩ current sense resistor providing a minimum 5A load current. The DC536B-B has an FDB8030L MOSFET in the DD package which when used with a 2.5mΩ sense resistor provides a minimum 16A load current.

## QUICK START PROCEDURE

DC536B is easy to set up to evaluate the performance of the LTC4211. Refer to Figure 1 for proper measurement equipment setup and follow the procedure below:

1. The DC536B is set up to operate in a 5V system. If the LTC4211 is to be evaluated at a different operating condition, follow steps 2 to 5 below, otherwise skip to step 6.
2. If evaluating at a voltage other than 5V, R3 must be adjusted for proper  $\overline{\text{RESET}}$  response. Select  $R3 = V_{\text{MIN}} \cdot 15\text{k}/1.223 - 15\text{k}$ , where  $V_{\text{MIN}}$  is the minimum output voltage expected for normal operation.
3. The ON pin operates as an input of a precision comparator and can accurately provide an adjustable undervoltage lockout. The DC536B is initially configured to turn on at  $4.15V_{\text{MIN}}$ . If 3.3V logic will drive this pin, R1 can be replaced with a short. If the ON pin will be used to provide undervoltage lockout, then select R1 such that  $R1 = V_{\text{UVLO}} \cdot 10\text{k}/1.39 - 10\text{k}$ , where  $V_{\text{UVLO}}$  is the minimum turn on voltage. Refer to the data sheet Figure 3 for common configurations.
4. For evaluating a circuit with up to 20A load, use DC536B-B board.
5. The soft start and power good ( $\overline{\text{RESET}}$  release) delay is factory set to 2.9ms. This delay can be adjusted by changing  $C_{\text{TIMER}}$ ; refer to the data sheet Table 1 for common values and the System Timing section for more detailed information.

6. After any necessary component changes have been made, connect a suitable load between VOUT and GND. This may be a passive resistive load or an active electronic load box.
7. Connect a power supply capable of supplying  $1.5 \cdot I_{\text{LOAD}}$  between the VIN and GND turrets. The minimum current capability of the supply must accommodate the tolerance of the circuit breaker threshold of  $\pm 20\%$ . With the  $7\text{m}\Omega$  factory installed sense resistor, the overload circuit breaker will trip at between 5.7A to 8.5A (7A nominal). Connect the ON/OFF turret to the VIN turret to enable power to the load. A function generator can be used to generate a single event and trigger a scope. The DC536B provides convenient turrets for observing the  $\overline{\text{FAULT}}$ ,  $\overline{\text{RESET}}$  and VOUT signals.
8. The following experiments can be run:
  - Turn on into a nominal load;
  - Turn on into an overload;
  - Turn on into a short circuit;
  - Turn on into a nominal load and increase the load until the LTC4211 trips off.

A digital storage scope provides a convenient means of observing the turn on and overload event. Observe the input or output current using a current probe. A current transformer can be used to observe the turn on current transients if a current probe is not available.

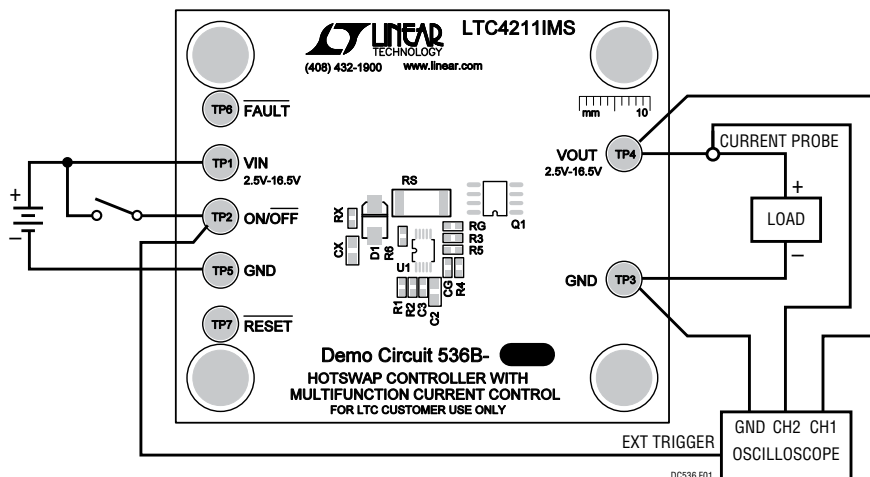
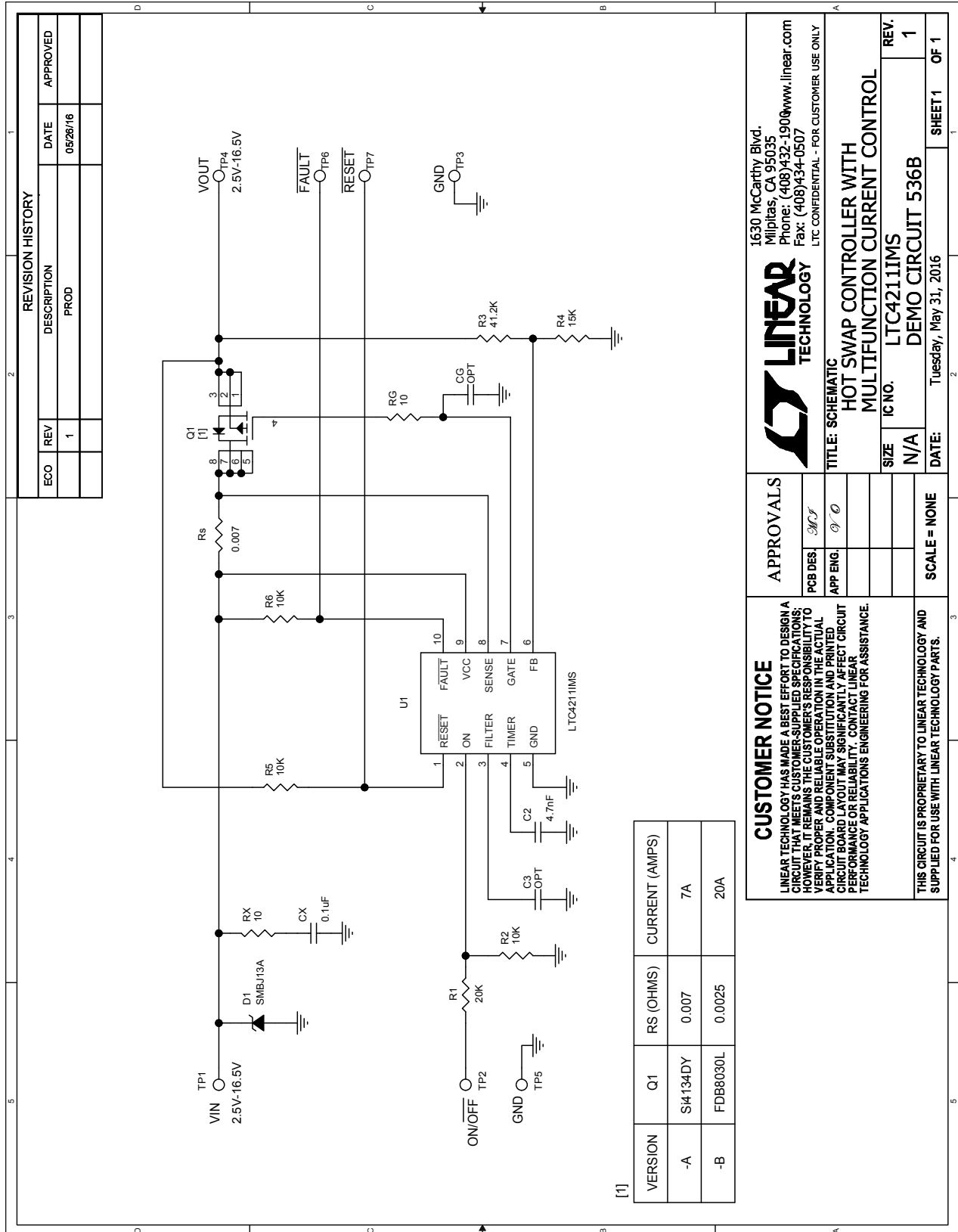


Figure 1. Proper Measurement Equipment Setup

**SCHEMATIC DIAGRAM**



**LINEAR TECHNOLOGY**

1630 McCarthy Blvd.  
Milpitas, CA 95035  
Phone: (408)432-1900 www.linear.com  
Fax: (408)434-0507  
LTC CONFIDENTIAL - FOR CUSTOMER USE ONLY

**TITLE: SCHEMATIC**

**HOT SWAP CONTROLLER WITH MULTIFUNCTION CURRENT CONTROL**

IC NO. LTC4211IMS

SIZE N/A

REV. 1

DATE: Tuesday, May 31, 2016

SHEET 1 OF 1

**CUSTOMER NOTICE**

LINEAR TECHNOLOGY HAS MADE A BEST EFFORT TO DESIGN A CIRCUIT THAT MEETS CUSTOMER-SUPPLIED SPECIFICATIONS. HOWEVER, IT REMAINS THE CUSTOMER'S RESPONSIBILITY TO VERIFY PROPER AND RELIABLE OPERATION IN THE ACTUAL APPLICATION. COMPONENT SUBSTITUTION AND PRINTED CIRCUIT BOARD LAYOUT MAY SIGNIFICANTLY AFFECT CIRCUIT PERFORMANCE OR RELIABILITY. CONTACT LINEAR TECHNOLOGY APPLICATIONS ENGINEERING FOR ASSISTANCE.

**APPROVALS**

PCB DES.	MC
APP ENG.	Ø

SCALE = NONE

THIS CIRCUIT IS PROPRIETARY TO LINEAR TECHNOLOGY AND SUPPLIED FOR USE WITH LINEAR TECHNOLOGY PARTS.

[1]

# DEMO MANUAL DC536B

---

## DEMONSTRATION BOARD IMPORTANT NOTICE

Linear Technology Corporation (LTC) provides the enclosed product(s) under the following **AS IS** conditions:

This demonstration board (DEMO BOARD) kit being sold or provided by Linear Technology is intended for use for **ENGINEERING DEVELOPMENT OR EVALUATION PURPOSES ONLY** and is not provided by LTC for commercial use. As such, the DEMO BOARD herein may not be complete in terms of required design-, marketing-, and/or manufacturing-related protective considerations, including but not limited to product safety measures typically found in finished commercial goods. As a prototype, this product does not fall within the scope of the European Union directive on electromagnetic compatibility and therefore may or may not meet the technical requirements of the directive, or other regulations.

If this evaluation kit does not meet the specifications recited in the DEMO BOARD manual the kit may be returned within 30 days from the date of delivery for a full refund. **THE FOREGOING WARRANTY IS THE EXCLUSIVE WARRANTY MADE BY THE SELLER TO BUYER AND IS IN LIEU OF ALL OTHER WARRANTIES, EXPRESSED, IMPLIED, OR STATUTORY, INCLUDING ANY WARRANTY OF MERCHANTABILITY OR FITNESS FOR ANY PARTICULAR PURPOSE. EXCEPT TO THE EXTENT OF THIS INDEMNITY, NEITHER PARTY SHALL BE LIABLE TO THE OTHER FOR ANY INDIRECT, SPECIAL, INCIDENTAL, OR CONSEQUENTIAL DAMAGES.**

The user assumes all responsibility and liability for proper and safe handling of the goods. Further, the user releases LTC from all claims arising from the handling or use of the goods. Due to the open construction of the product, it is the user's responsibility to take any and all appropriate precautions with regard to electrostatic discharge. Also be aware that the products herein may not be regulatory compliant or agency certified (FCC, UL, CE, etc.).

No License is granted under any patent right or other intellectual property whatsoever. **LTC assumes no liability for applications assistance, customer product design, software performance, or infringement of patents or any other intellectual property rights of any kind.**

LTC currently services a variety of customers for products around the world, and therefore this transaction **is not exclusive**.

**Please read the DEMO BOARD manual prior to handling the product.** Persons handling this product must have electronics training and observe good laboratory practice standards. **Common sense is encouraged.**

This notice contains important safety information about temperatures and voltages. For further safety concerns, please contact a LTC application engineer.

Mailing Address:

Linear Technology  
1630 McCarthy Blvd.  
Milpitas, CA 95035

Copyright © 2004, Linear Technology Corporation