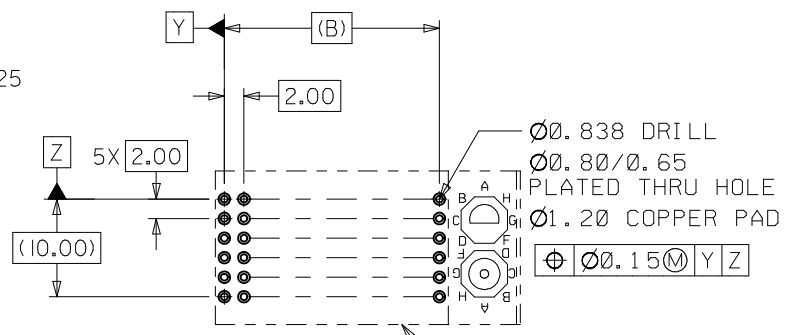
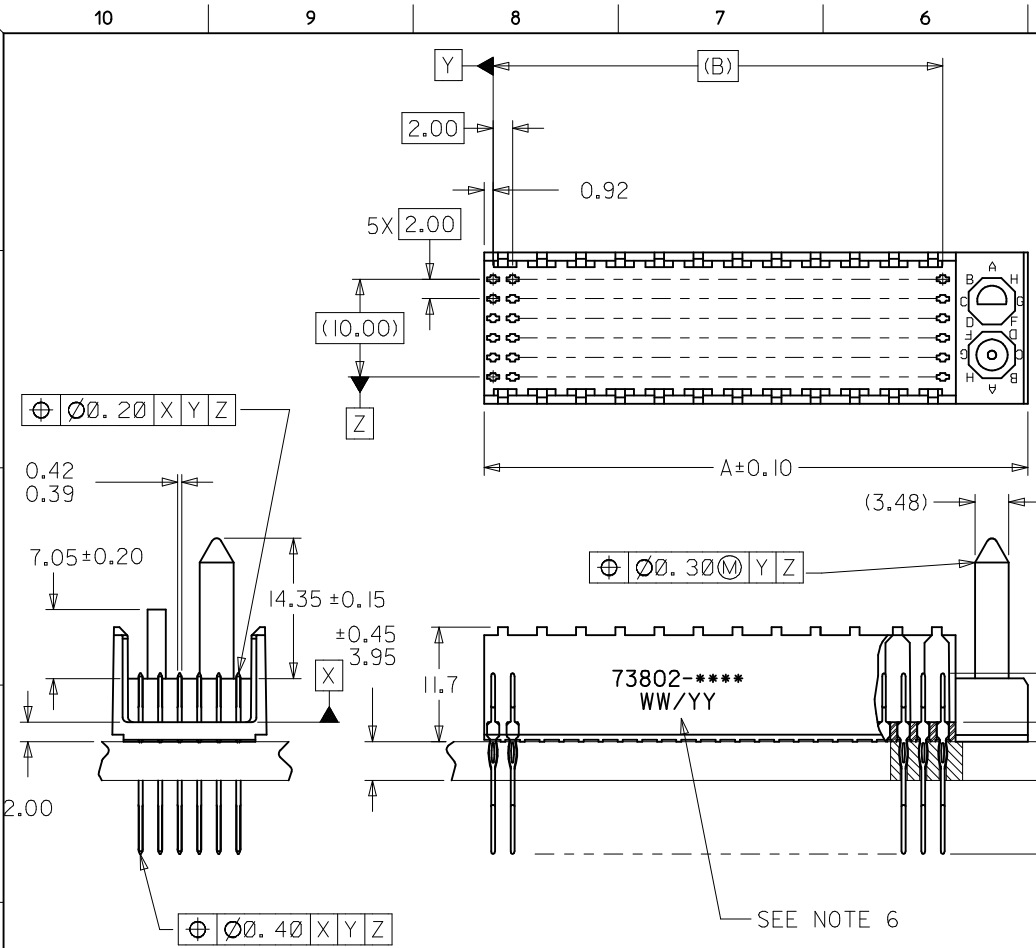


| MATERIAL NUMBER | NUMBER OF CONTACTS | DIM "A" | DIM "B" | DIM "M" | PLATING         |
|-----------------|--------------------|---------|---------|---------|-----------------|
| 73802-00**      | 72                 | 31.6    | 22.00   | 5.00    | GOLD/GOLD FLASH |
| 73802-02**      | 72                 | 31.6    | 22.00   | 6.00    | GOLD/GOLD FLASH |
| 73802-10**      | 144                | 55.6    | 46.00   | 5.00    | GOLD/GOLD FLASH |
| 73802-12**      | 144                | 55.6    | 46.00   | 6.00    | GOLD/GOLD FLASH |
| 73802-20**      | 72                 | 31.6    | 22.00   | 5.00    | *GOLD/MATTE TIN |
| 73802-22**      | 72                 | 31.6    | 22.00   | 6.00    | *GOLD/MATTE TIN |
| 73802-30**      | 144                | 55.6    | 46.00   | 5.00    | *GOLD/MATTE TIN |
| 73802-32**      | 144                | 55.6    | 46.00   | 6.00    | *GOLD/MATTE TIN |

\*FORMERLY TIN/LEAD



PCB LAYOUT: COMPONENT SIDE  
RECOMMENDED PCB THICKNESS: 3.95±0.45

NOTES:

1. MATERIALS: HOUSING - LIQUID CRYSTAL POLYMER (LCP)  
GLASS-FILLED, UL 94V-0, COLOR: BLACK.  
TERMINAL - PHOSPHOR BRONZE.
2. FINISH: SELECTIVE GOLD (Au) IN CONTACT AREA, 0.76 MICROMETERS MINIMUM THICKNESS;  
NICKEL (Ni) AND GOLD FLASH OVERALL.  
SELECTIVE GOLD (Au) IN CONTACT AREA, 0.76 MICROMETERS MINIMUM THICKNESS;  
SELECTIVE MATTE TIN (Sn) ON IN TAIL AREA.  
NICKEL (Ni) OVERALL.
3. THIS PART CONFORMS TO MOLEX PRODUCT SPECIFICATION PS-73780-9999.
4. FOR MIXED CONTACT MATING LENGTHS, CONSULT FACTORY FOR AVAILABILITY.
5. PACKAGE PER 70873-0818.
6. PARTS MARKED WITH PART NUMBER AND DATE CODE ON EITHER SIDE,  
APPROXIMATELY WHERE SHOWN.

|  |  |  |                 |       |              |                        |
|--|--|--|-----------------|-------|--------------|------------------------|
| LEAD FREE CONVERSION<br>EC NO: UCP2013-3253<br>DRAWN BY: RWHIPPLE 2013/02/05<br>CHKD BY: MWOLFE 2013/02/05<br>APPR: SMILLER 2013/08/05 | QUALITY SYMBOLS                              | GENERAL TOLERANCES (UNLESS SPECIFIED)  | DIMENSION STYLE | SCALE | DESIGN UNITS | THIRD ANGLE PROJECTION |
|  | $\nabla F/0$<br>$\nabla E/0$<br>$\nabla F/0$ | mm   | MM ONLY         | 2:1   | METRIC       |                        |
|  |  | INCH   |                 |       |              |                        |
|  |  | 4 PLACES ± --- ± ---<br>3 PLACES ± --- ± ---<br>2 PLACES ± 0.05 ± ---<br>1 PLACE ± 0.10 ± ---<br>0 PLACE ± --- ± --- |                 |       |              |                        |

|  |              |              |           |
|--|--------------|--------------|-----------|
| ANGULAR ±1/2°<br>DRAFT WHERE APPLICABLE<br>MUST REMAIN WITHIN DIMENSIONS | MATERIAL NO. | DOCUMENT NO. | SHEET NO. |
| SEE CHART  | SD-73802-001 | 1 OF 2       |           |

SALES ASSEMBLY  
HDM DOUBLE-END MIDPLANE  
POLAR/GUIDE OPTION

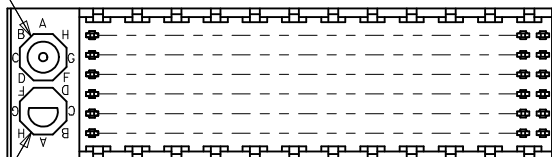
**molex**

THIS DRAWING CONTAINS INFORMATION THAT IS PROPRIETARY TO MOLEX INCORPORATED AND SHOULD NOT BE USED WITHOUT WRITTEN PERMISSION

10 9 8 7 6 5 4 3 2 1

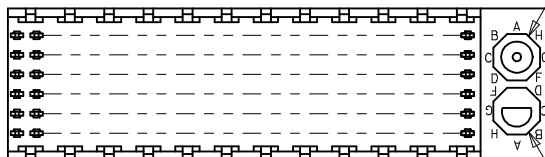
LOCATION A

LOCATION B



ROW F

ROW A



LOCATION B

LOCATION A

REF. MATERIAL NUMBER 73802-1009  
GUIDE PIN IS IN LOCATION A  
POLARIZING KEY IS IN LOCATION B, POSITION E

REF. MATERIAL NUMBER 73802-1008  
GUIDE PIN IS IN LOCATION B  
POLARIZING KEY IS IN LOCATION A, POSITION E

**MATERIAL NUMBER ASSIGNMENT**

73802- \* \* \* \*

- 0 = 72-CIRCUIT, GOLD/GOLD FLASH
- 1 = 144-CIRCUIT, GOLD/GOLD FLASH
- 2 = 72-CIRCUIT, \*GOLD/MATTE TIN
- 3 = 144-CIRCUIT, \*GOLD/MATTE TIN

\*FORMERLY TIN/LEAD

- 0 = 5.00 MATING LENGTH
- 1 = RESERVED
- 2 = 6.00 MATING LENGTH

| NUMBER | GUIDE POST LOCATION | POLAR KEY POSITION |
|--------|---------------------|--------------------|
| 00     | B                   |                    |
| 01     | A                   | A                  |
| 02     | B                   |                    |
| 03     | A                   | B                  |
| 04     | B                   |                    |
| 05     | A                   | C                  |
| 06     | B                   |                    |
| 07     | A                   | D                  |
| 08     | B                   |                    |
| 09     | A                   | E                  |
| 10     | B                   |                    |
| 11     | A                   | F                  |
| 12     | B                   |                    |
| 13     | A                   | G                  |
| 14     | B                   |                    |
| 15     | A                   | H                  |
| 16     | B                   |                    |
| 17     | A                   | N/A                |
| 18     | N/A                 |                    |

|   |   |  |                           |                              |                     |  |
|---|---|--|---------------------------|------------------------------|---------------------|--|
| SEE SHEET 1<br>EC NO: UCP2013-3253<br>DRWN:RWHIPPLE 2013/02/05<br>CHKD:HWOLFE 2013/02/05<br>APPR:SMILLER 2013/08/05 | QUALITY SYMBOLS   | GENERAL TOLERANCES (UNLESS SPECIFIED)  | DIMENSION STYLE           | SCALE                        | DESIGN UNITS        | THIRD ANGLE PROJECTION   |
|   | $\nabla F/0$<br>$\nabla E/0$<br>$\nabla D/0$                                | mm      INCH<br>4 PLACES ± --- ± ---<br>3 PLACES ± --- ± ---<br>2 PLACES ± 0.05 ± ---<br>1 PLACE ± 0.10 ± ---<br>0 PLACE ± --- ± --- | MM ONLY                   | 1:1                          | METRIC              | TITLE<br>SALES ASSEMBLY<br>HDM DOUBLE-END MIDPLANE<br>POLAR/GUIDE OPTION |
|   | DRAWN BY: RWHIPPLE<br>CHECKED BY: HWOLFE<br>APPROVED BY: SMILLER            | DATE: 2013/02/05<br>DATE: 97/05/19<br>DATE: 2013/08/05   | MATERIAL NO.<br>SEE CHART | DOCUMENT NO.<br>SD-73802-001 | SHEET NO.<br>2 OF 2 |  |
|   | ANGULAR ±1/2°<br>DRAFT WHERE APPLICABLE<br>MUST REMAIN<br>WITHIN DIMENSIONS | THIS DRAWING CONTAINS INFORMATION THAT IS PROPRIETARY TO MOLEX<br>INCORPORATED AND SHOULD NOT BE USED WITHOUT WRITTEN PERMISSION     |                           |                              |                     |  |

9 8 7 6 5 4 3 2 1