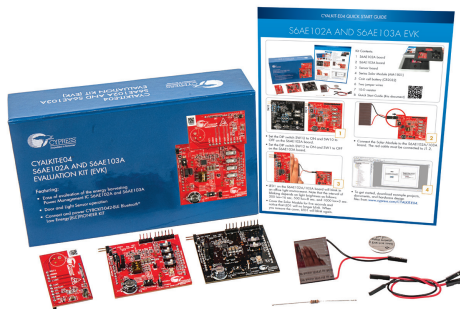
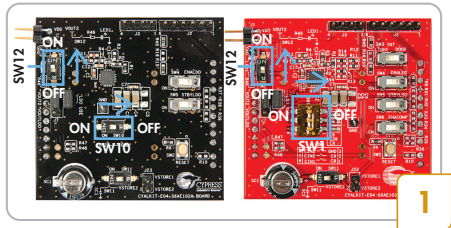
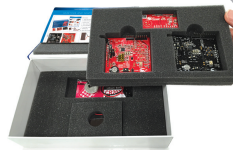


S6AE102A AND S6AE103A EVK

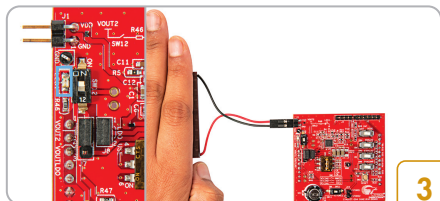


Kit Contents:

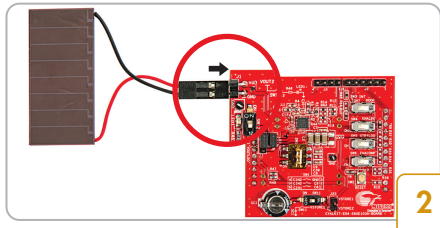
- 1 S6AE102A board
- 2 S6AE103A board
- 3 Sensor board
- 4 Series Solar Module (AM-1801)
- 5 Coin cell battery (CR2032)
- 6 Two jumper wires
- 7 10-Ω resistor
- 8 Quick Start Guide (this document)



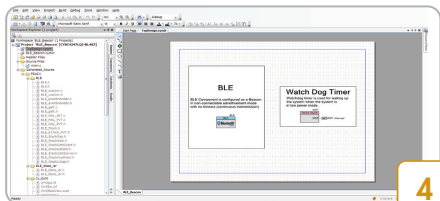
- Set the DIP switch SW12 to ON and SW10 to OFF on the S6AE102A board.
- Set the DIP switch SW12 to ON and SW1 to OFF on the S6AE103A board.



- LED1 on the S6AE102A/103A board will blink in an office light environment. Note that the interval of blinking depends on light brightness as follows: 200 lux=16 sec, 500 lux=8 sec, and 1000 lux=3 sec.
- Cover the Solar Module for five seconds and notice that LED1 will no longer blink. When you remove the cover, LED1 will blink again.



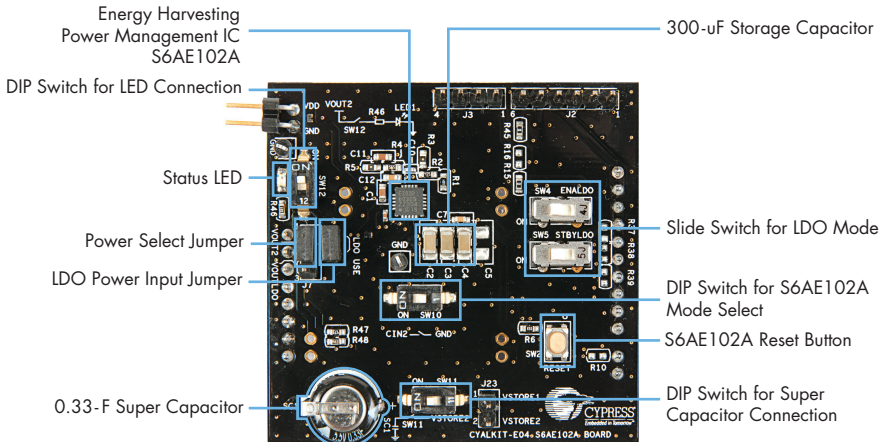
- Connect the Solar Module to the S6AE102A/103A board. The red cable must be connected to J1.2.



- To get started, download example projects, documents, and hardware design files from www.cypress.com/CYALKIT-E04.

S6AE102A AND S6AE103A EVK

S6AE102A Board Details



S6AE103A Board Details

