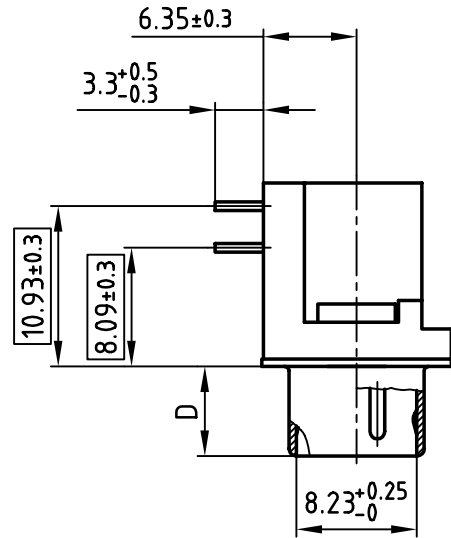
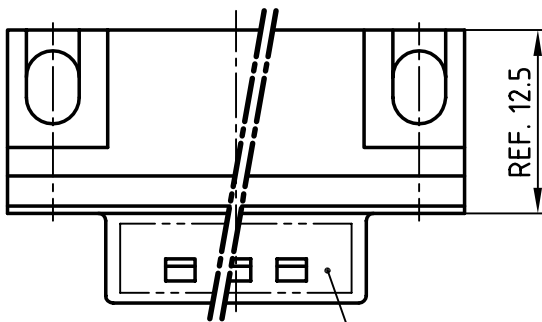
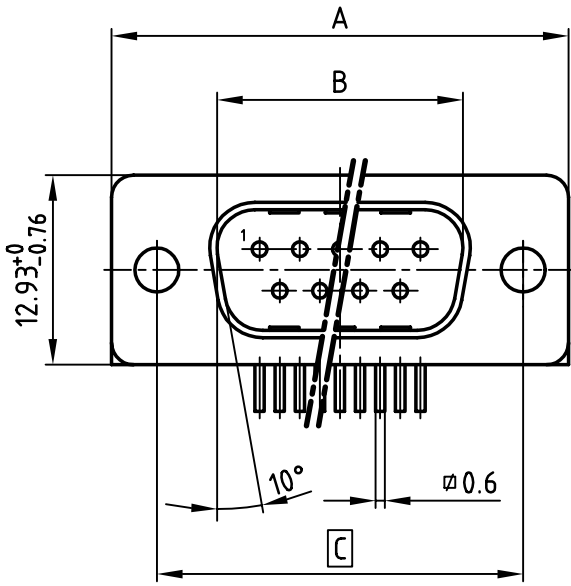


used for: D-SUB

POS.	A $-0.76$	B $+0.25$	C	D $-0.3$	Part NO.
9	31.19	16.79	25.00 $\begin{smallmatrix} +0.12 \\ -0.13 \end{smallmatrix}$	6.12	
15	39.52	25.12	33.30 $\begin{smallmatrix} +0.15 \\ -0.1 \end{smallmatrix}$	6.12	
25	53.42	38.84	47.04 $\pm 0.13$	5.99	<b>302A525603X-S</b>
37	69.70	55.30	63.50 $\pm 0.13$	5.99	



**NOTES:**

1. METALSHELLS: STEEL; min. 320µ" TIN
2. INSULATORS: PBT GF UL 94 V-0, BLACK
3. CONTACTS: COPPER ALLOY  
PLATING: min. 8µ" HARD GOLD OVER min. 50µ" NICKEL
4. P.C.B. HOLE DRILLINGS ON DRAWING NO.: 16K11IUA
5. CONNECTOR IS PART MARKED: PART-NO. CONEC Y/WW
6.  = CRITICAL DIMENSION

APPROVAL # FREIGABE # DEBLOCAGE # AUTORIZACION # APPROVAL	
CUSTOMER APPROVAL DATE:	
NAME:	TITLE:
COMPANY NAME:	
APPROVAL # FREIGABE # DEBLOCAGE # AUTORIZACION # APPROVAL	

THIS DRAWING MAY NOT BE COPIED OR REPRODUCED IN ANY WAY, AND MAY NOT BE PASSED ON TO A THIRD PARTY WITHOUT WRITTEN PERMISSION.  
 OWNERSHIP AND COPYRIGHT OF CONEC GmbH  
 DO NOT ALTER CAD DRAWING BY HAND

tolerance			
2002	date	name	
drawn	28.06.	Parei	
appd.	28.06.	E. Mickenbecker	
norm	DIN 41652		
d-old			
rev.	description	date	name



scale:	2:1
material:	SEE NOTES
title:	
<b>D-SUB MALE 90°</b> 9-37pos. SOLDER PIN ANGLED 0.318" with threaded insert	
dwg no:	AutoCAD 2000
<b>16K1A698</b>	
part no:	SEE TABLE
DIN-A 4 sh: 1/1	