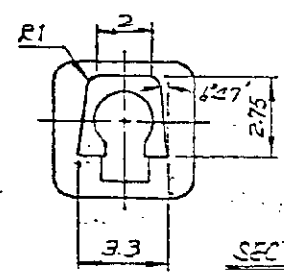
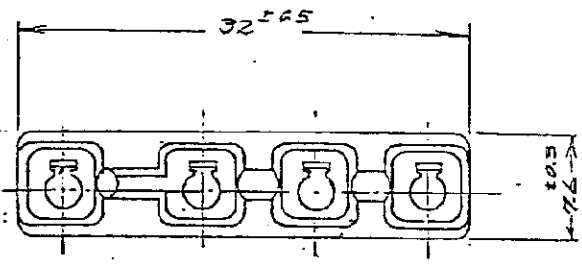
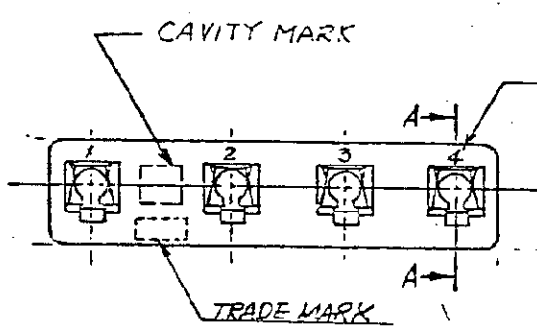
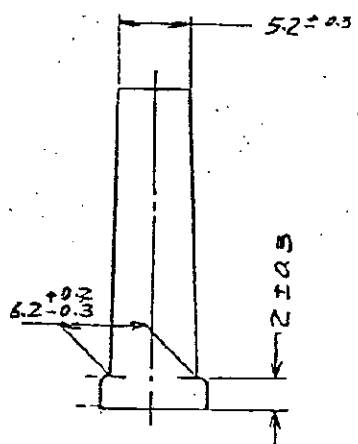
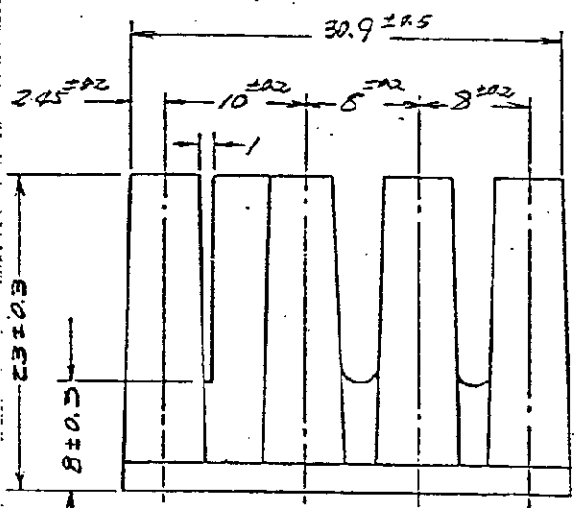


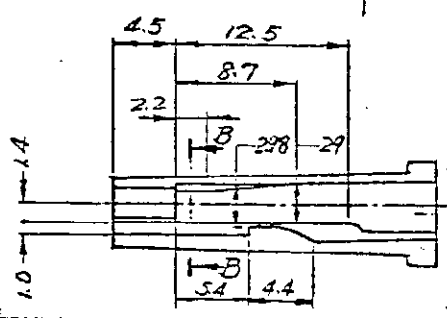
171159



SECTION B-B  
4:1



SECTION A-A



NOTES:

- 1. PRODUCT SPEC NO. 108-5054
- 2. PRODUCT OF BRASIL.
- 3. OBSOLETE PARTS: OBSOLETE CIS STREAMLINING PER D.RENAUD/D.SINISI

1	-4	NORYL SE-1	WHITE	
2	-3	NORYL N225J	BLACK	
3	171159-1	NORYL 100	GRAY	
		PART NO	MAT'L	COLOR

D2	REV. PER ECO-10-000445	KK	AEG	JAN10
D1	变更(材料名称) FJ00-5321-96	Y.S.	FTN	5-SEP '96
D	变更(4-12-7-270)	N. DAVE		3/88
C2	OBSOLETE-5,6 ECN NO J-9485	Y.A.	M.S.	8/86
C1	ADD -6 JSM-6043	olm	AKS	5/2/91
C	FEEDBACK W/ CHANGES JSD-5805	GS	AKS	4/3/90
LTR	变更(REVISION RECORD)	DR.	CHK.	DATE
DR.	N. Jima 6/3/90	OE.		
CHK.		APD.		8/21/90

MATERIAL: SEE TABLE		AMP (JAPAN), LTI Tokyo, Japan	
FINISH: COLOR, SEE TABLE		AMP	
WIRE RANGE: — — — — —		CLASS: HOUSING	
INSULATION DIA: — — — — —		TYPE: RECEPTACLE HOUSING	
TOLERANCE: ±0.4 EXCEPT AS NOTED		SCALE: 2:1	
PART NAME: 4 POSITION PIN RECEPTACLE HOUSING FOR 2.36 PIN CONTACT.		SIZE: J A C-171159	
		REV: D2	