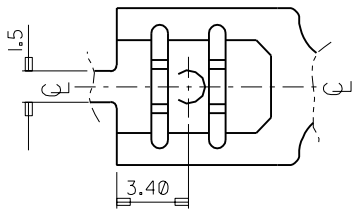


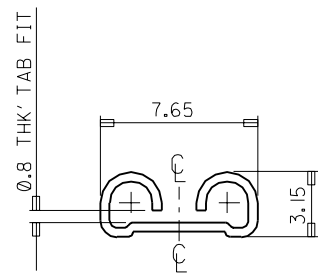
"A" →



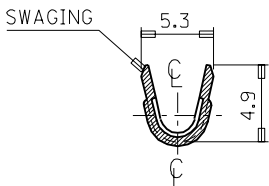
NOTES

1. MATERIAL : BRASS , 0.45mm THICKNESS
2. PART NUMBER
3. MATING TAB THICKNESS : 0.8 mm

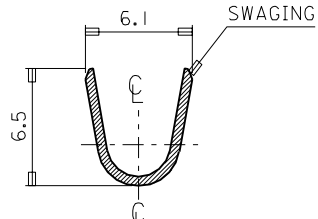
PART NUMBER	FINISH
35725-2700	UNPLATED
35725-2710	POST PLATED TIN
35725-2740	POST PLATED TIN-LEAD



VIEW "A"



SEC' : B-B"



SEC' : C-C"

WIRE RANGE AWG #14-#10					MATERIAL SEE NOTES	MOLEX-KOREA CO.,LTD.	
INSULATION RANGE Ø 3.8 -5.3	C	REVISED	97-015	97.2.18	GENERAL TOLERANCE DIMENSION : 1 PLCS : +0.30 ANGLE : 2 PLCS : +0.20		
DIE FEED: //	B	REVISED	96-048	96.4.19	DIMENSION CLASSIFICATION ▽ : CRITICAL ▼ : MAJOR ( ) : REFERENCE	APP'D BY	SCALE 4.5 : 1
APPLICATOR FEED: 21.50	A	CAD REDRAWING		93.7.2	ASS'Y PART	TITLE : .250 SLIP-ON RECEPTACLE ( SLOT )-L	
Q'TY/ REEL OR PACK 4.000 Q'TY/REEL	LTR	REVISION RECORD	ECN	DATE	DESCRIPTION/ ENG. NO.	ENG. NO.	SEE NOTES
REVISE ONLY ON CAD SYSTEM					//	//	SHEET 1 of 1
							REV C