



Rear horizontal rail, centre (E)

When subdividing 6 U into 2 x 3 U, the adaptor rail accommodates the guide rails when fastened to the centre horizontal rail.

- HP pitch pattern of holes for the precise installation of guide rails
- M4 and M2.5 thread on the end face
- Straight-through core hole
- Horizontal rail 192 HP without machining on the end faces. Suitable for cutting to length

Material:

Extruded aluminum section

Surface finish:

Clear-chromated or anodized

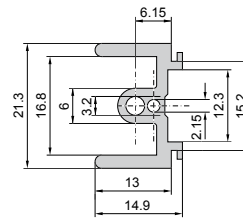
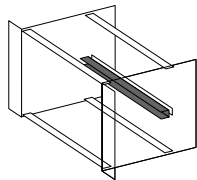
Usable width (HP)	Packs of	Order No.
12	1	3684.587
16	1	3684.588
20	1	3684.589
40	1	3684.964
42	1	3684.590
63	1	3686.005
84	1	3684.591
84	1	3685.272 ¹⁾
858.5 mm	1	3684.584
192	1	3688.004 ²⁾

¹⁾ Including 2 assembly screws

²⁾ Anodized

! Also required:

Assembly screws M4 x 12, packs of 100, order no. 3654.300, see page 164



Rear horizontal rail, with channel for Ripac ECO (C7)

To accommodate guide rails and for the attachment of Z rails, insulating strips or conductive strips.

- HP pitch pattern of holes for the precise installation of guide rails
- Channel for slide-in covers
- For mounting backplanes/Z rails, threaded inserts (3684.610) are additionally required
- M4 thread on end face
- Straight-through core hole
- Not suitable for mounting under covers

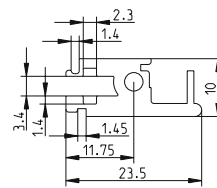
Material: Extruded aluminum section

Surface finish: Clear-chromated

Usable width (HP)	Packs of	Order No.
84	1	3688.104

! Also required:

Assembly screw M4 x 12



Rear horizontal rail, with integral Z rail for Ripac ECO (C8)

To accommodate guide rails. Integral Z rail for mounting connectors to DIN 41612.

- HP pitch pattern of holes for the precise installation of guide rails
- 84 tapped holes M2.5 for connector mounting
- M4 thread on end face
- Straight-through core hole

Material:

Extruded aluminum section

Surface finish:

Clear-chromated

Usable width (HP)	Packs of	Order No.
84	1	9901.991

! Also required:

Assembly screws

	Packs of	Order No.
M4 x 12	100	3654.300

