

Table with columns: ATLANTIC VERSION TERMINATOR INTERFACE ADAPTER, PART NUMBER, REVISION, DESCRIPTION, FEED TYPE, CONVERT TO, PART NUMBERS REQUIRED. Includes a diagram of the terminator interface adapter.

APPLICATOR DATA table with columns: CRIMP, SIZE, TYPE. Includes rows for WIRE and INSUL. Includes icon for applicator instructions 408-10389.

TERMINAL DATA: G&H TERMINAL LEAR CRIMP SPECIFICATION. Includes terminal name, wire strip length, insulation diameter range, and terminal application specification.

TERMINALS APPLIED table with columns: TE TERMINAL, G&H TERMINAL, TE SEAL, G&H SEAL. Includes part numbers like 2113401-1 and 26595.330.185.

Table with columns: WIRE SIZE, CRIMP HEIGHT mm [INCH], CRIMP HEIGHT REFERENCE SETTING. Includes rows for 1.00mm2, 0.75mm2, 0.50mm2.

- 1 RECOMMENDED SPARE PARTS
2 GREASE BEARING SURFACES LIGHTLY
3. LUBRICATE DAILY PER THE APPLICATOR INSTRUCTION SHEET SUPPLIED WITH THE APPLICATOR.
4 APPLICATOR SPECIFIC DATA TO BE ENTERED INTO BLANK MEMORY CHIP AT ASSEMBLY. SEE BELOW FOR PART NUMBER:
MECHANICAL FEED WITH "SMART APPLICATOR" CONVERSION: 8-2266141-4
PNEUMATIC FEED WITH "SMART APPLICATOR" CONVERSION: 8-2266141-4
SERVO FEED WITH "FINE CRIMP HEIGHT ADJUST": 8-2266141-5
SERVO FEED WITH "NON-CRIMP HEIGHT ADJUST": 8-2266141-6
5. ADJUSTMENT OF THE STRIPPER MAY BE REQUIRED WHEN MOVING THE APPLICATOR BETWEEN BENCH AND LEADMAKER APPLICATIONS.
6 APPLY PART NUMBER 1-23419-5 LOCTITE TO THREADS OF ITEMS 62 & 242. FOR -6 ONLY APPLY PART NUMBER 1-23419-5 LOCTITE TO THREADS OF ITEMS 37 & 242.
7 GREASE THREADS, GROOVE AND O-RING ON ITEMS 35 & 252.
8 MAGNET, ITEM 166 MUST BE ORIENTED CORRECTLY IN ORDER TO PROPERLY ACTUATE THE COUNTER.
9 CRIMP HEIGHT REFERENCE SETTING WAS THE SETTING USED WHEN THE APPLICATOR WAS QUALIFIED AT THE FACTORY. ADJUSTMENT MAY BE NECESSARY WHEN RUNNING APPLICATOR IN THE FIELD.
10 SPARE FEED CAM STORAGE LOCATION REFER TO INSTRUCTION SHEET FOR ADDITIONAL INFORMATION.
11 TO CONVERT THE APPLICATOR TO A NON-CARRIER CUTTING STYLE, REMOVE ITEM 13 AND ATTACH TO THE LOCATION ON THE BACK SIDE OF THE HOUSING. REFER TO INSTRUCTION SHEET FOR ADDITIONAL INFORMATION.
12 WHEN ASSEMBLING A NON CRIMP HEIGHT ADJUST APPLICATOR (-6) USE SHIMS FROM ITEM 260 TO ACHIEVE A NOMINAL SHIM HEIGHT OF 4.55.
13 THIS APPLICATOR APPLIES TERMINAL WITH A SEAL.
14 APPLY TORO-SEAL IN ALLEN SOCKET TO FILL HOLE AFTER FLAT HD HAS BEEN ADJUSTED TO CORRECT HEIGHT AT QUALIFICATION. APPLY #1-23419-5 LOC-TITE TO THREADS.
15. THIS APPLICATOR IS SPECIFIC FOR USE IN A STRIPPER SEAL TERMINATING UNIT.

APPLICATOR STYLE CONVERSION CHART

Main conversion chart table with columns: CONVERT TO, PART NUMBERS REQUIRED. Lists various feed types (PNEUMATIC, MECHANICAL, SERVO) and their corresponding part numbers.

\*WARNING
ON INSTALLATION, SET WIRE DISC, ITEM 40 TO LARGEST WIRE SIZE SETTING. USE OF SETTINGS BELOW MINIMUM REQUIRED CRIMP HEIGHT SETTING WILL CAUSE DAMAGE TO CRIMP TOOLING.

Table with columns: PART NO, DESCRIPTION, ITEM NO. Includes part numbers -77, -7, -6, -5, -2, -1 and descriptions like APPLICATOR SHIM PACK and O-RING.

ATLANTIC VERSION
Shown on sheets 1 of 4 & 2 of 4
(Pacific version shown on sheets 3 of 4 & 4 of 4)

SET UP GAUGE LOC 2119599-1, DIST 66. Includes a table for REVISIONS with columns: REVISION, DESCRIPTION, DATE, DWN, APVD.

Large table with columns: P, LTM, DESCRIPTION, DATE, DWN, APVD. Lists numerous components like PUSH ROD, AIR FEED, BUSHING, FEED CAM, SPRING, etc. with their respective quantities and part numbers.

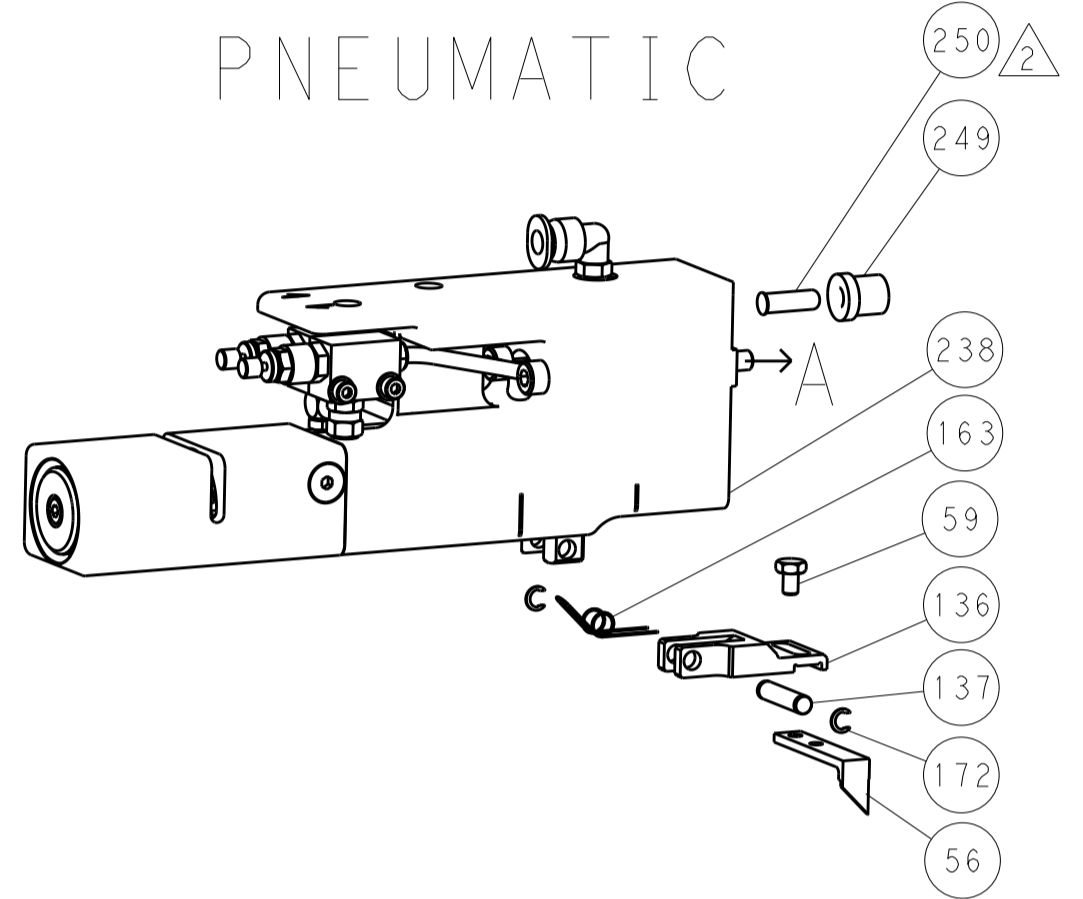
Product information block including dimensions, tolerances, material, finish, weight, and drawing information. Includes the STC logo and company name: Ocean Side Feed Applicator.

LOC	DIST	REVISIONS					
A	66	P	LTN	DESCRIPTION	DATE	DWN	APVD
		-	-	SEE SHEET 1	-	-	-

### FEED TYPE MECHANICAL



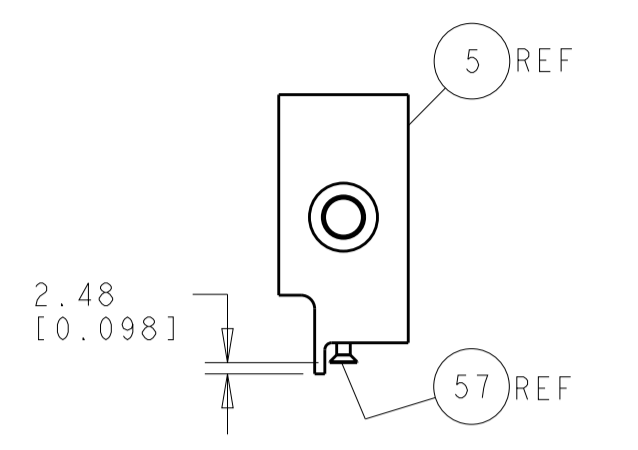
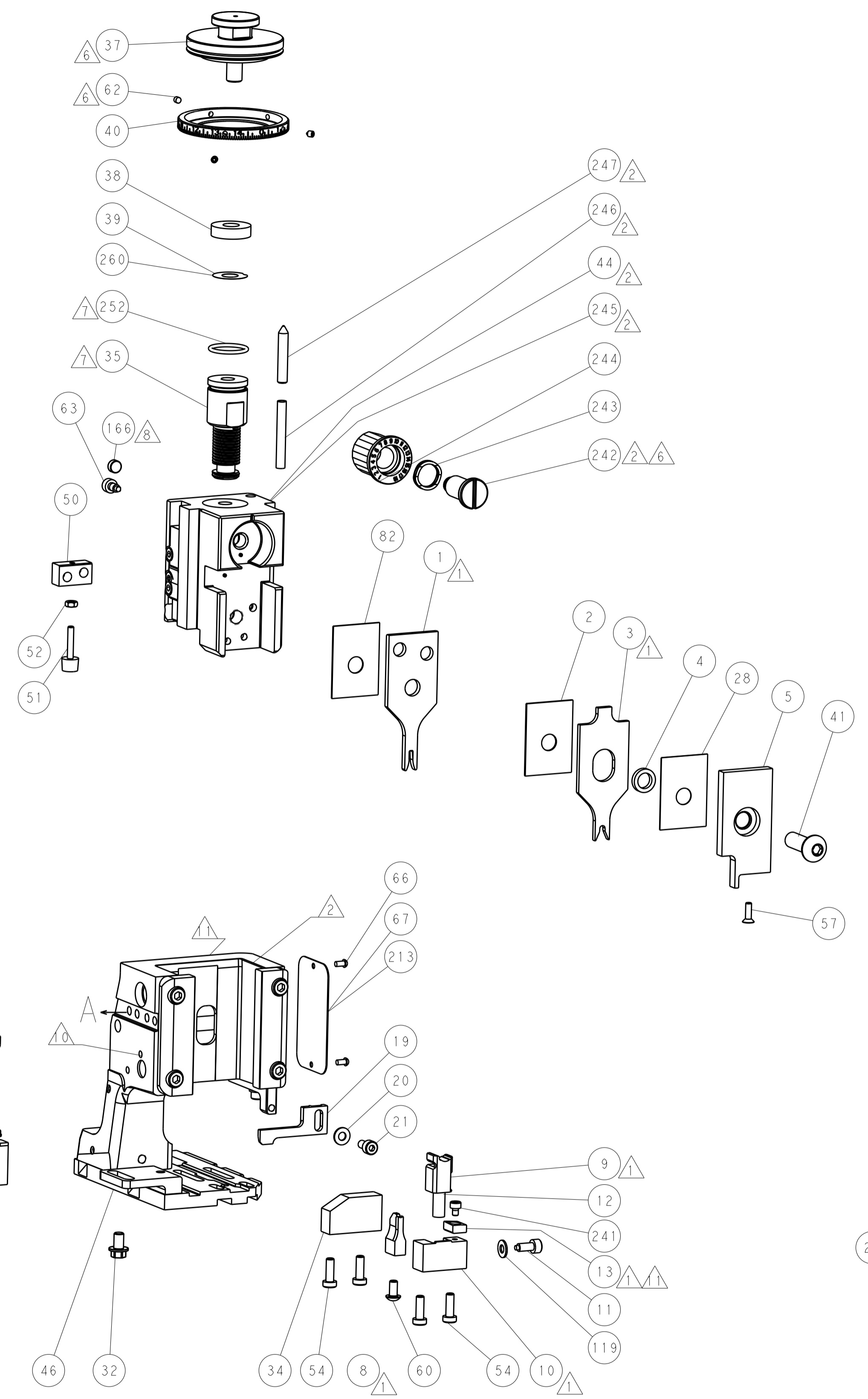
### PNEUMATIC



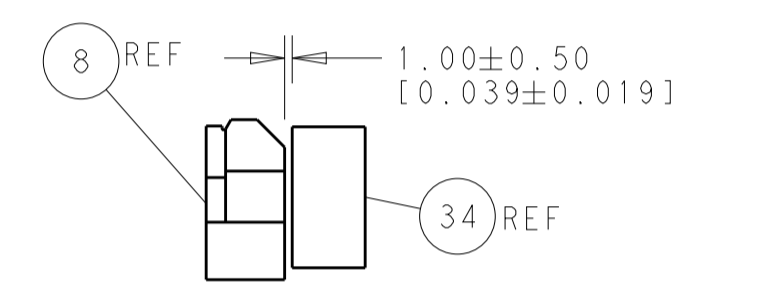
### SERVO LATCH PLATE



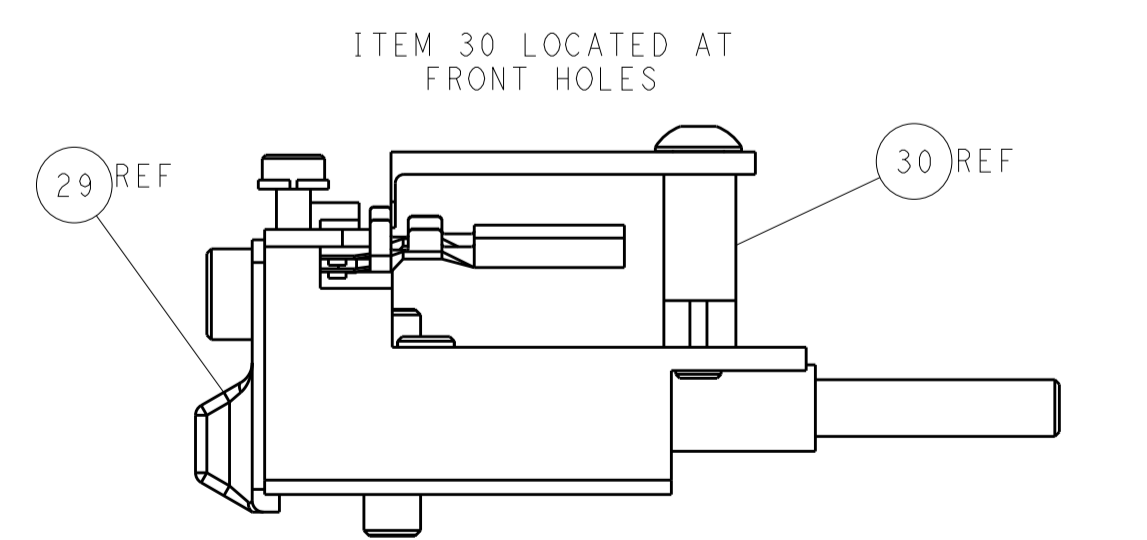
### CAM POSITIONS



SHEAR DEPRESSOR DETAIL



TERMINAL SUPPORT LOCATION



FEED TRACK POSITION GUIDE BY INSULATION BARREL

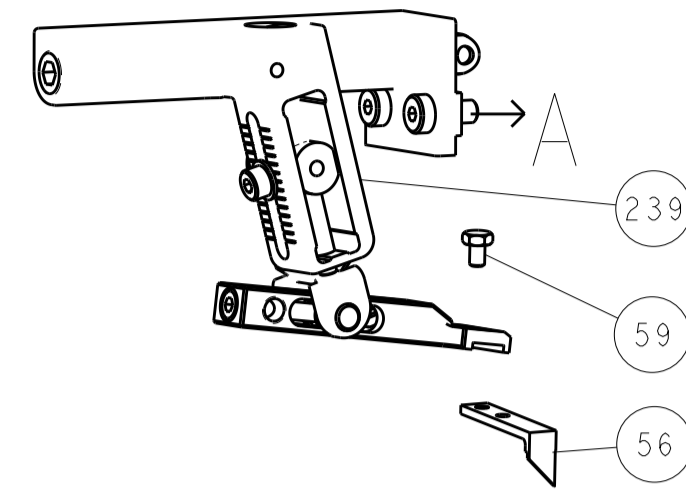
**ATLANTIC VERSION**  
 Shown on sheets 1 of 4 & 2 of 4  
 (Pacific version shown on sheets 3 of 4 & 4 of 4)

<small>THE DRAWING IS CONTROLLED THROUGHOUT THE PRODUCT LIFECYCLE. ANY CHANGES TO THIS DRAWING MUST BE APPROVED BY THE DESIGN ENGINEER AND THE QUALITY ASSURANCE DEPARTMENT. THIS IS THE ONLY AUTHORIZED SOURCE FOR THE LATEST REVISION.</small>		DWN: 05NOV2013 CHK: L. HUANG L. ZHANG APVD: H. GUO 05NOV2013	TE Connectivity Harrisburg, PA 17105-3608
DIMENSIONS: mm TOLERANCES UNLESS OTHERWISE SPECIFIED: 0 PLC ±0.5 1 PLC ±0.13 3 PLC ±0.013 4 PLC ±0.001 ANGLES ±0.001	PRODUCT SPEC APPLICATION SPEC WEIGHT MATERIAL FINISH	NAME: Ocean Side Feed Applicator SIZE: A1 CAGE CODE: 00779 DRAWING NO: 2266141 SCALE: 1:2 SHEET: 2 of 4 REV: A	RESTRICTED TO:

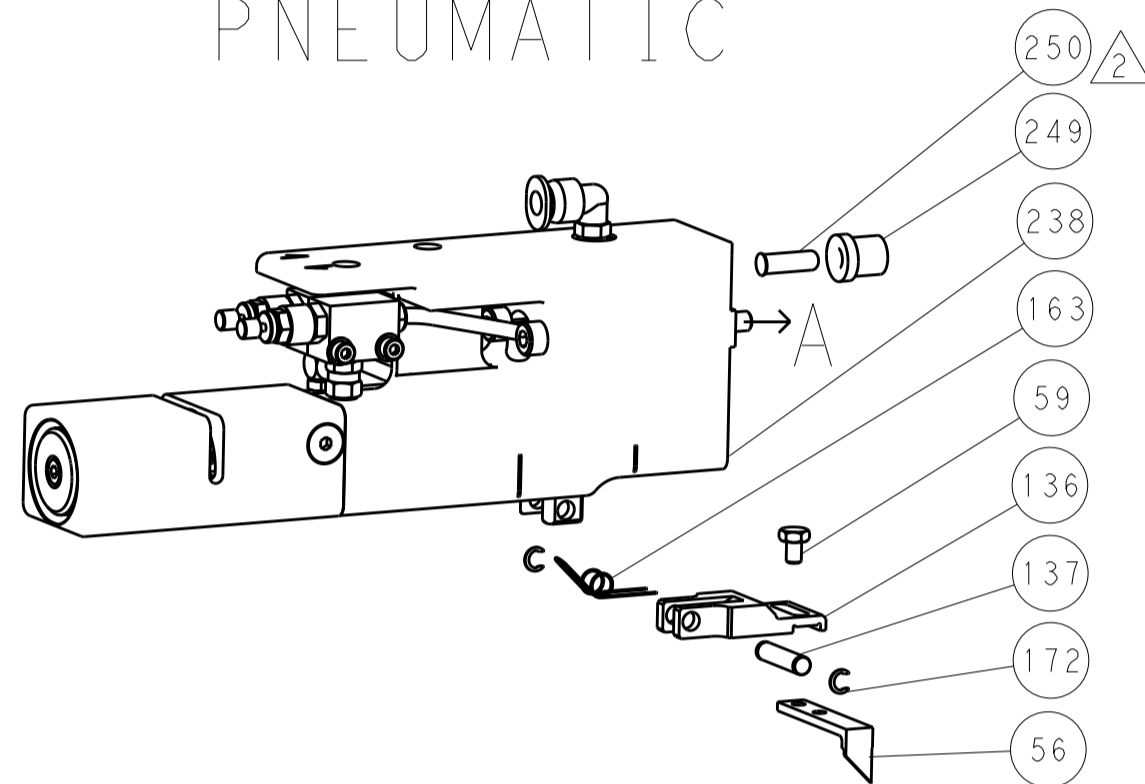


LOC	DIST	REVISIONS			
		P. LTH	DESCRIPTION	DATE	DWN APVD
A	66	-	SEE SHEET 1	-	-

# FEED TYPE MECHANICAL



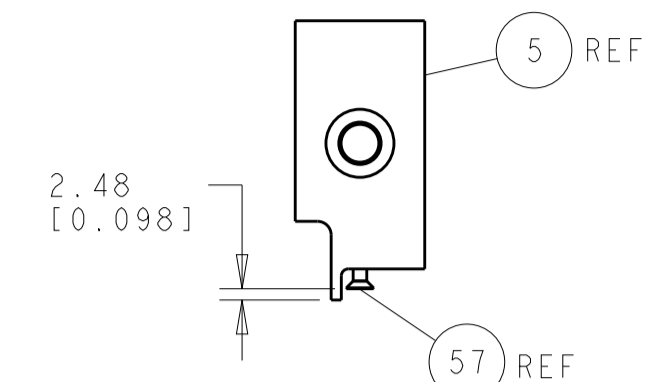
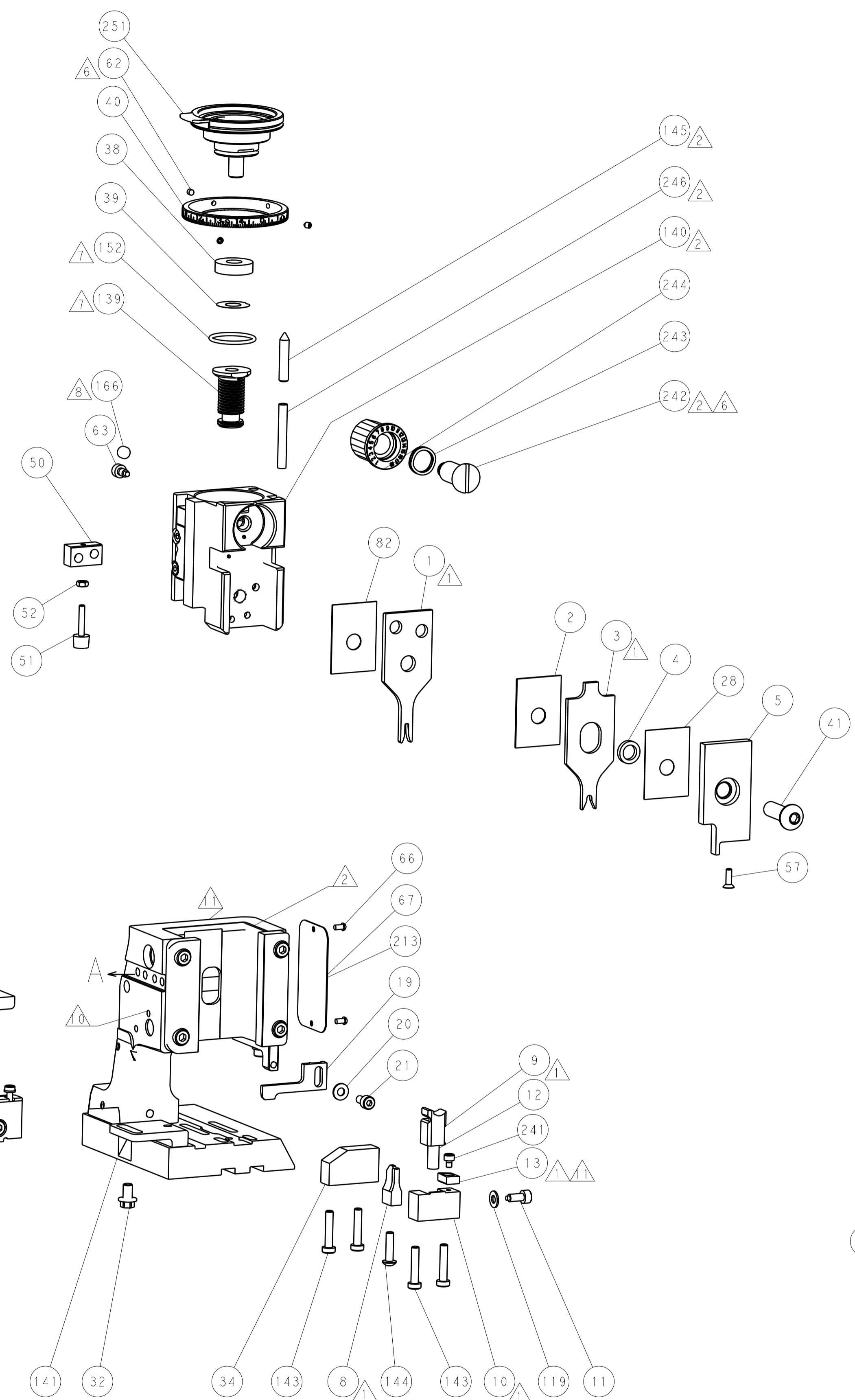
# PNEUMATIC



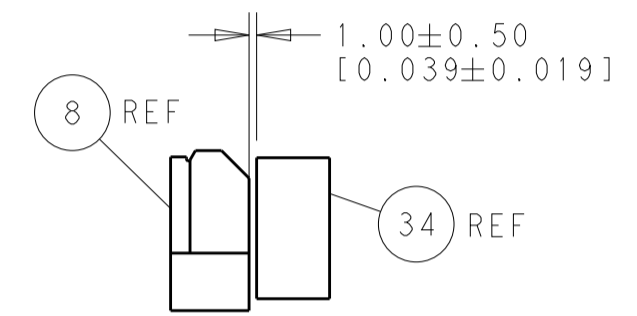
# SERVO LATCH PLATE



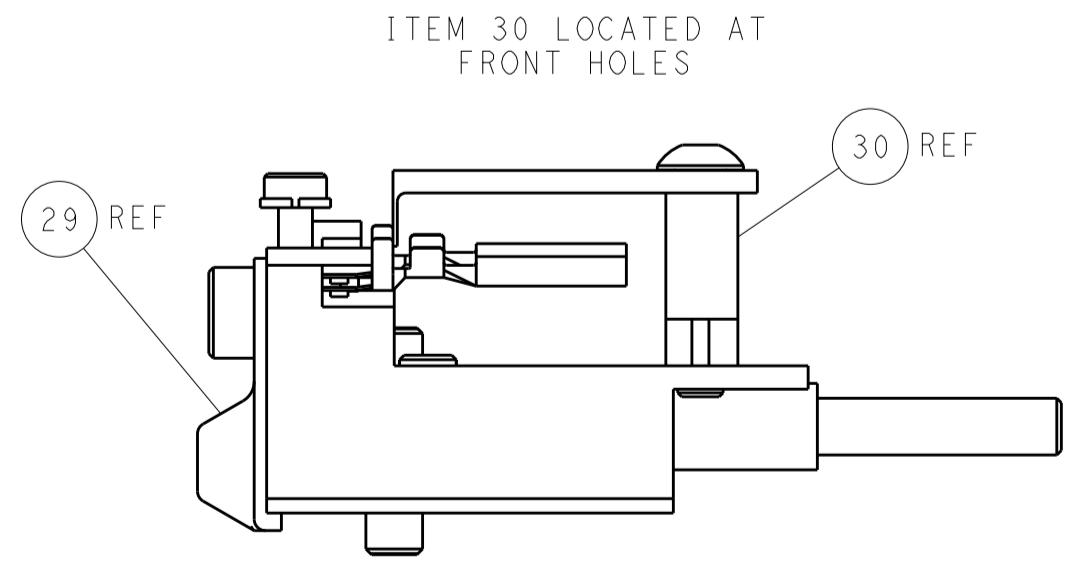
# CAM POSITIONS



SHEAR DEPRESSOR DETAIL



TERMINAL SUPPORT LOCATION



FEED TRACK POSITION GUIDE BY INSULATION BARREL

**PACIFIC VERSION**  
 Shown on sheets 3 of 4 & 4 of 4  
 (Atlantic version shown on sheets 1 of 4 & 2 of 4)

DIMENSIONS: mm 		TOLERANCES UNLESS OTHERWISE SPECIFIED: 0 PLC ±.5 1 PLC ±0.5 2 PLC ±0.13 3 PLC ±0.013 4 PLC ±0.001 ANGLES ±.1		DWN R. HUANG 05NOV2013 CHK L. ZHANG 05NOV2013 APVD H. GUO 05NOV2013		NAME Ocean Side Feed Applicator	
MATERIAL:		FINISH:		WEIGHT:		SIZE: CAGE CODE DRAWING NO. RESTRICTED TO A1 00779 C=2266141	
Customer Accessible Production Drawing				SCALE: 1:2		SHEET 4 OF 4 REV A	