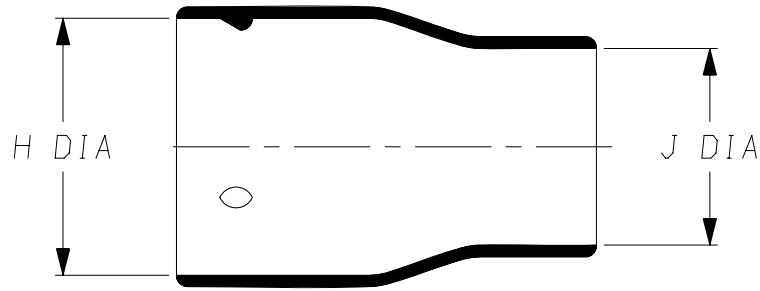
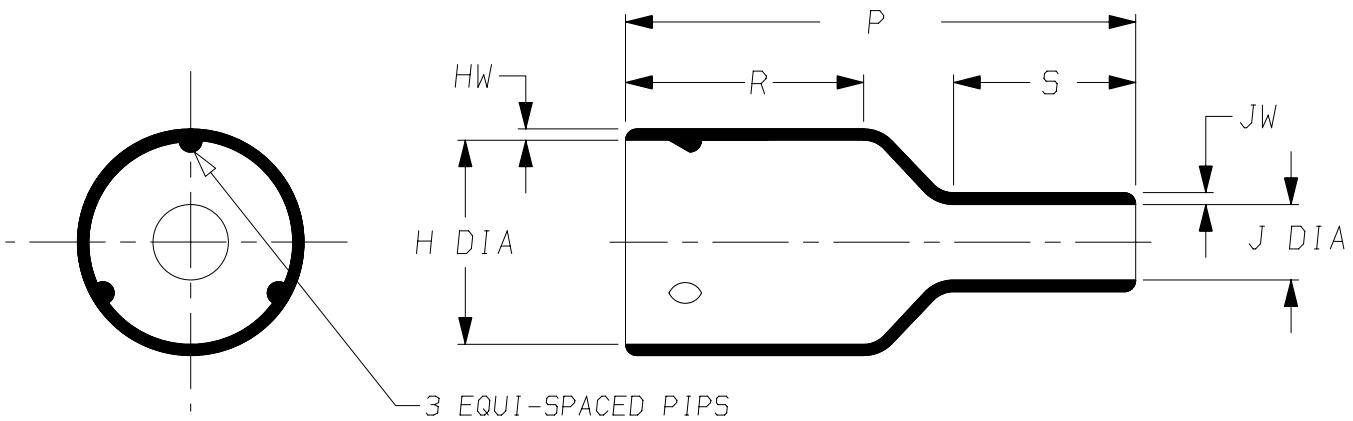


a) Part as supplied.

209W1**-100



b) Part after unrestricted recovery.



DIMENSIONS in millimetres
(in inches, for reference)

PART No.	SIZE	H		J		P ±10%	R ±10%	S ±10%	HW ±20%	JW ±20%
		MIN a	MAX b	MIN a	MAX b					
209W112	A	23 (0.91)	17.0 (0.67)	14 (0.55)	3.0 (0.12)	75 (2.95)	42 (1.65)	21.0 (0.83)	2.0 (0.08)	2.0 (0.08)
209W132	B	29 (1.14)	22.0 (0.87)	22 (0.87)	7.0 (0.28)	80 (3.15)	42 (1.65)	26.0 (1.02)	2.0 (0.08)	2.0 (0.08)
209W143	C	35 (1.38)	27.0 (1.06)	28 (1.10)	9.0 (0.35)	90 (3.54)	42 (1.65)	34.5 (1.36)	2.0 (0.08)	2.0 (0.08)
209W153	D	45 (1.77)	37.0 (1.46)	35 (1.38)	14.0 (0.55)	90 (3.54)	42 (1.65)	32.0 (1.26)	2.0 (0.08)	2.0 (0.08)
209W164	E	50 (1.97)	42.0 (1.65)	42 (1.65)	16.0 (0.63)	100 (3.94)	42 (1.65)	40.0 (1.57)	2.0 (0.08)	2.0 (0.08)
209W175	F	60 (2.36)	57.0 (2.24)	52 (2.05)	19.0 (0.75)	130 (5.12)	62 (2.44)	44.5 (1.75)	3.0 (0.12)	3.0 (0.12)

Copyright (!)

The copyright in this drawing is the property of Tyco Electronics UK Ltd. The drawing is issued on the condition that it is not copied, reproduced or disclosed to a third party, either in whole or in part without the prior written consent of Tyco Electronics UK Ltd.

Drawn A.LILLEY. Checked

Issue 2

Date August 2007

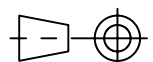
Conforms to ISO Recommendations

Approval
Design

MKTG.

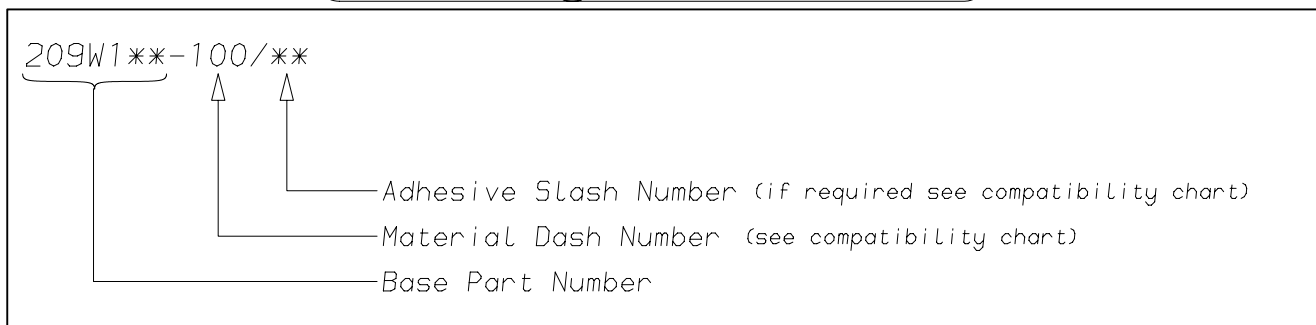
Tech.

3rd Angle Projection
Not to Scale



Raychem		Specification Control Drawing	Part Number 209W1**-100 Issue 2
Iss.	Date	E.C.R. No.	Details of Change
2	August 2007	CR07-HM-017	209W164 was typed as 209W163 SCD was titled 209W112 thru 175-100

(Ordering Information)



(COMPATIBILITY CHART)

Material Dash Number	Material Description	SPEC Number	Coating Slash Number
-100	ZEROHALOGEN	RW-2058	/86, /180

NOTES

- ① As supplied dimensions are for uncoated parts, when coating is added, entry diameters will reduce by 1.5mm Max.

Tyco Electronics UK Ltd. Faraday Road, Swindon, Wiltshire, SN3 5HH England Telephone: (01793) 528171 Fax: 572516	Tyco Electronics Corporation 300, Constitution Drive, Menlo Park, CA 94025 USA Telephone (650) 361-3860 Fax: (650) 361-5579
Cage Code K1010	Cage Code 06090